

INTERIOR DESIGN



... in line with the trend.



Let us inspire you ...

The ability of wood to create an atmosphere of warmth and security is unsurpassed and cannot be matched by any other material. Wood always makes a deep impression, works well with other materials such as stone, steel and glass, and not only gives greater scope to our creativity, but – thanks to its simplicity and natural patterns - is also deeply inspiring.

TABLE OF CONTENTS

Products :

Oceanic	4
Oceanic XL	5
Antarctic	6
Norcapp	8
Thermo	11
Coffee & cream	12
Softline	14
Chamfer	16
Faseline	19

Technical information:

Surface finishes	20
Assembly instructions	21
Standard forms of delivery	24
pinucolor wax-based wood varnish	28



A fresh breeze ...



For your **vacation** at home ...

Wax-based
wood varnish



intensive white



yellow



blue



terracotta



mint



grey

Oceanic – stained and fine sawn nordic spruce profiles – give a slightly rugged, weathered impression and are ideal for creating a genuine Mediterranean look. They come in a range of stains that are all highly reminiscent of sundrenched, hot Mediterranean climes.

Oceanic profiles features a 3 mm gap between individual boards, creating beautiful clear lines and complementing both traditional and contemporary interiors. This makes them extremely popular and suitable for use in all areas of your home.

Oceanic – solid wood profiles are equipped with tongue and groove on all four sides – making them extremely easy to install.

They are ideal for use in renovation projects, for covering old wallpaper or painted walls and give any room a new lease of life!



From top to bottom:

14 x 146 mm

intensive white and blue

yellow

grey



Enjoy the expanse ...



Wax-based
wood varnish



white intensive

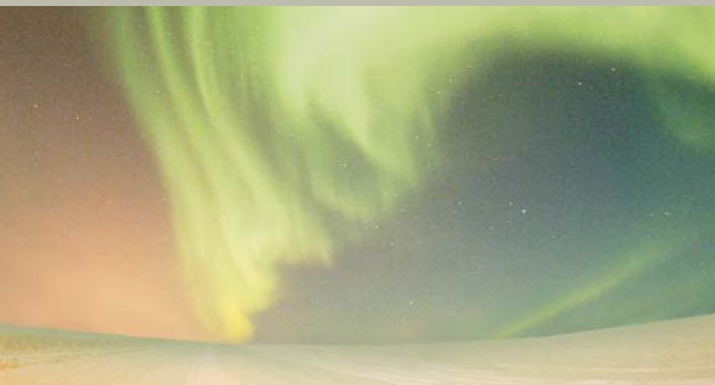
The "Oceanic XL" profiles are the broadest profiles in the PINUS product range. The profiles are held in a loft style which emphasises the organic materials.

In combination with glass or metal, they provide you with a number of options.

This profile is a little thicker, meaning it can be used well for furnishing attic rooms, for example.



intensive white | 21 x 146 / 196 mm



The rugged charm
of the South Pole ...



Pure seduction ...



Long an established approach in fashion, it is now also making inroads in interior design: the vintage look makes conscious use of materials that look as if they have already been in extended use, growing old gracefully. Only natural materials are suitable for this – therefore wood is predestined for interior design.

The Antarctic solid wood profile, for example, conveys the impression that its surface has been **roughened to a natural beauty by the harsh winds of the South Pole.**

This helps create an unmistakeable and inspiring atmosphere in the living room just as well providing background to a display of goods in a boutique.

Characteristic :

Kiln dried to approximately 12% wood moisture.



glacier blue, borealisgreen, iceberg



borealisgreen, glacier blue, iceberg



iceberg, glacier blue



Stained look



iceberg



moonlight



glacier blue



borealisgreen



southpole grey



This profile won't
leave you out in the cold ...



Majestically large ...



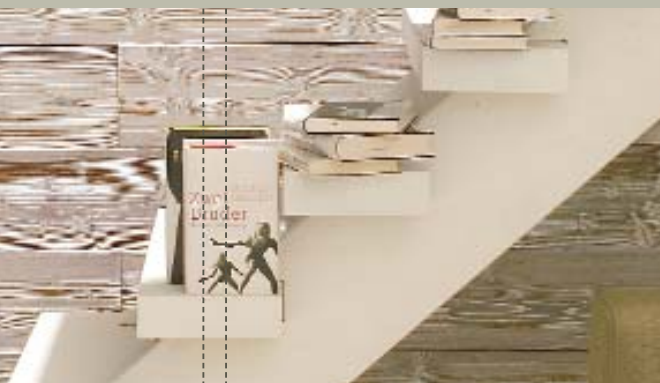
polar grey | 21 x 196 mm

The "Norcapp" profiles bring tundra to your home and captivate you with their authentic breadth and beauty. The colour shades boldly convert the cold of the northern hemisphere into the warmth of these wooded steppes and thus give your interior a charming subarctic flavour.

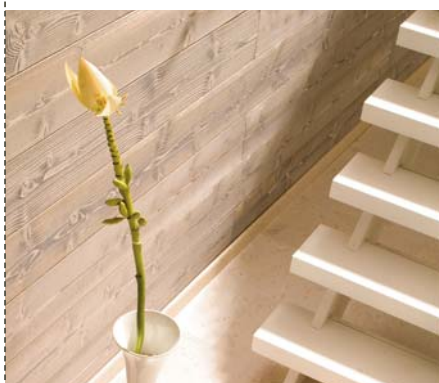
This broad profile with its brushed and structured surface can be laid both horizontally and vertically, with minimalistic and very contemporary results.

Product benefits:

Approximately 12% kiln-dried.



polar grey | 21 x 196 mm



From top to bottom:

iceberg

tundra brown

polar grey

Stained look



iceberg white



polar grey



fjord grey



taiga brown



tundra brown



The **warmth** beneath the skin ...



The non-processed organic wall panelling is back. It is the nearest thing to wood in its natural form and has a captivatingly fine style which is achieved using the broad heat-treated profile boards.

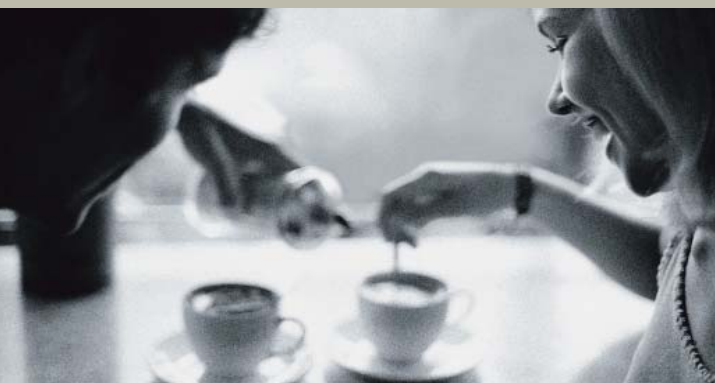
This even more authentic wall panelling is available with a brushed or hacked surface. The little imperfections are its whole appeal.



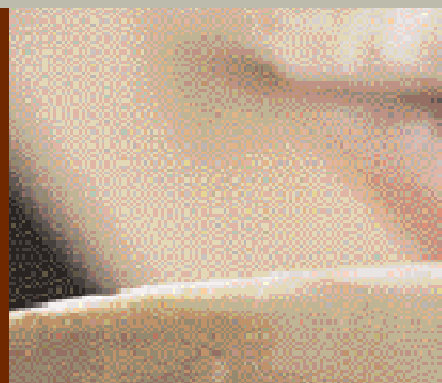
thermo-treated | 21 x 196 mm



Nordic spruce
thermo-treated



So far, you`ve only mixed
your coffee with cream ...



... why not enjoy your interior just the same!

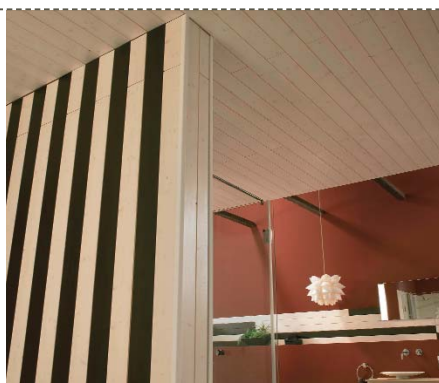
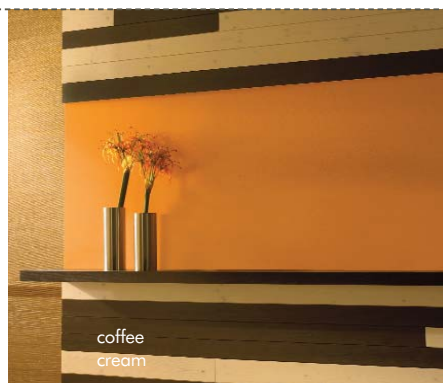
Creating a living space to our particular liking is becoming increasingly important to more and more of us. In doing so, we heavily rely on nature for inspiration.

A particular room atmosphere as a whole, gains more importance to us than just the colour of the couch.

This is why PINUS is now offering "COFFEE & CREAM" - a profile range that gives each one of us the opportunity to create walls and ceilings to suit our individual tastes!

Find joy in decorating. Solid wood profiles available in three dimensions and each in the shade of coffee brown and transparent white, as in "COFFEE & CREAM", can be mixed and interchanged - just as you like your coffee: "How do you drink your coffee?" - Black, with cream, sugar or milk.

Use the advantage of playful design options by emphasizing certain areas with coffee brown profiles or scale back others with transparent-white ones. Alternatively, one can lay the three dimensions within one shade only, in order to achieve an interesting structure to the wall.





... **endless possibilities**. A room can be made to look higher and narrower using vertical, and lower and wider using horizontal profiles. Dark colours will make a room look smaller, and light ones will make it seem larger.

Light is also a very important aspect to consider in interior design and is a decisive factor when deciding whether to go for “coffee” or “cream” ...



Wax-based
wood varnish



coffee



cream



Silky shine ...



Give it a shine!



Glossy wood glaze



clear

The multi-faceted softline profile presents its brown shiny shades in a most regal manner.

The special glossy wood glaze produces a pleasant

silky gloss on the high-grade planed profile woods. Softline is a welcome design element in both the kitchen and the bathroom.



honey



oak



mahagoni



dark walnut



walnut



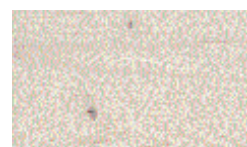
mahagoni | 14 x 121 mm



transparent | 14 x 121 mm

Wax-based
wood varnish

transparent



white

A profile without complexes ...

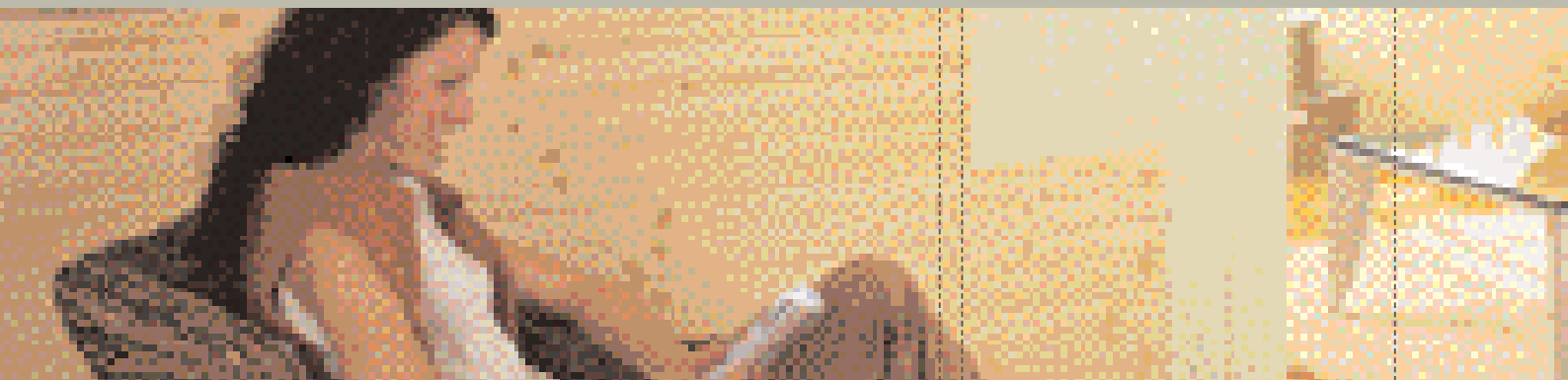


The Softline profile is particularly easy to the eye and to the touch with its generous, emphasized curves. Its sculptured, well proportioned roundings make it the undisputed favourite profile for experienced sensualists.

This profile is a little thicker, meaning it can be used well for furnishing attic rooms, for example.



transparent | 19 x 146 mm



Wax-based
wood varnish



intensive white



white



transparent



sand



apricot



yellow



mint



light blue

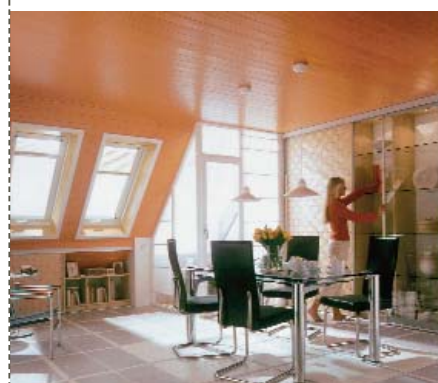
Spice up ... your home!

Why not add a little spice to your personal space by combining a range of colours or alternating the direction of your profiles?

The Chamfer profile is ideal for use with all types of interior designs – whether traditional or contemporary – and creates beautiful and even walls and ceilings.

NB:

The 14 mm Chamfer profile boards are kiln-dried to a residual moisture content of approx. 14%.



From top to bottom:

14 x 121 mm

mint

apricot

yellow and white



Wax-based
wood varnish



transparent



intensive white

Wide rooms ...

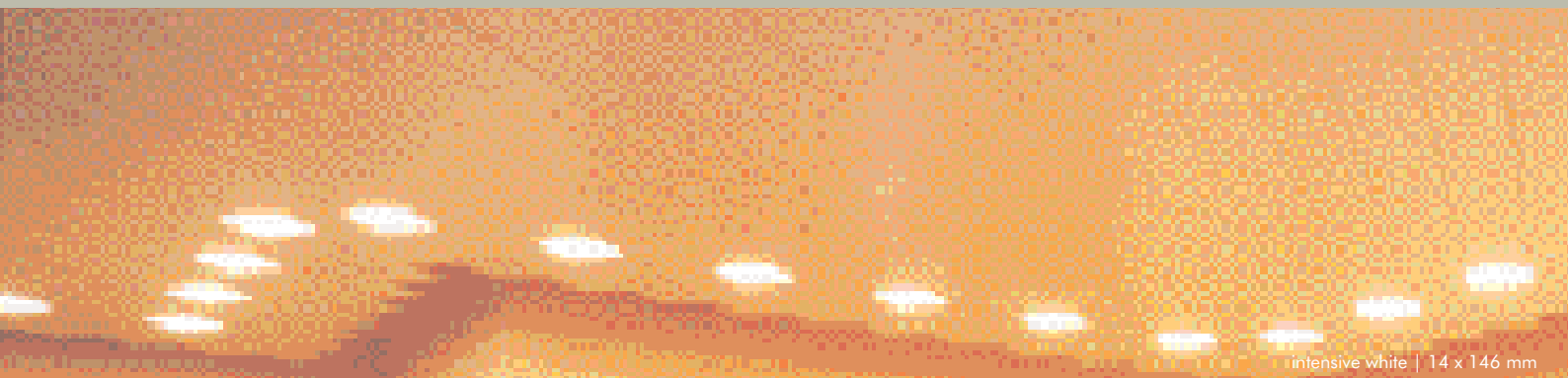


This somewhat thicker version of the chamfer profile can be used particularly well for furnishing attic rooms, for example.

The 19 mm Chamfer profiles are extremely popular for use in loft conversions and as soffits.



transparent | 19 x 146



intensive white | 14 x 146 mm

Wax based
wood varnish



intensive white

Elegant and simple



transparent

Faseline is elegant and simple and, with its slightly chamfered edges, creates beautiful even walls and ceilings. This contemporary, light and friendly ambience is further deepened by its intensive white wax-based varnish finish which simply softens the graining of the wood rather than hiding it.

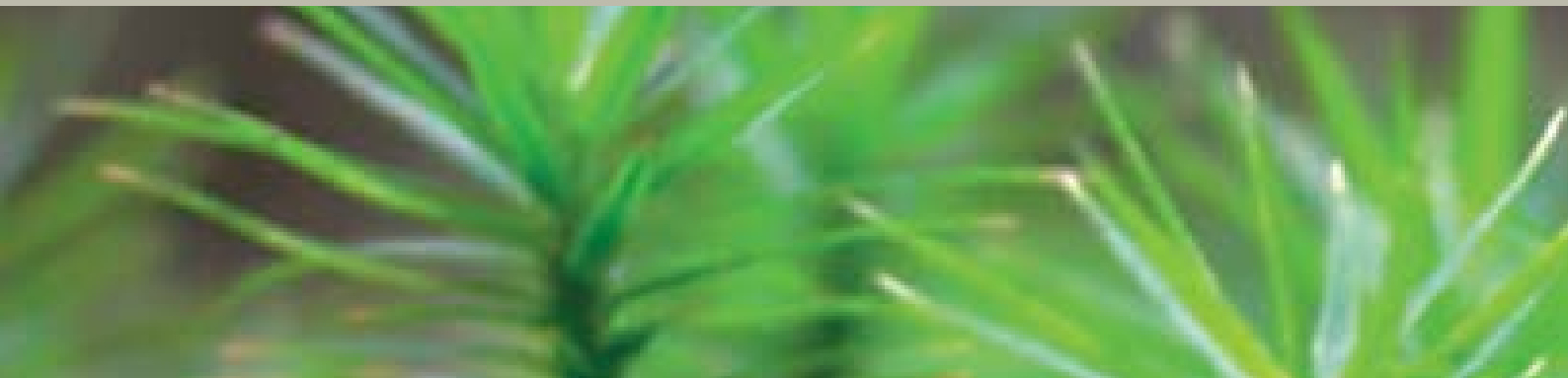
This attractive profile is shown to its best advantage when used in conjunction with our transparent wax-based varnish. All of our wax-based varnishes are open-pored, breathable and elastic. This means that Faseline profiles, which are always stained or varnished, are also suitable for use in damp areas.

NB:

Faseline profile boards are kiln-dried to a residual moisture content of approx. 12%.



intensive white | 14 x 146 mm



Surface finishes

Factory finished wooden profiles do not require painting and can be installed immediately following acclimation. This saves you a lot of time and keeps your home free from all the mess associated with painting.

The consistency, quality and type of finish achieved by factory finishing cannot be matched by the finishes achieved using a brush.

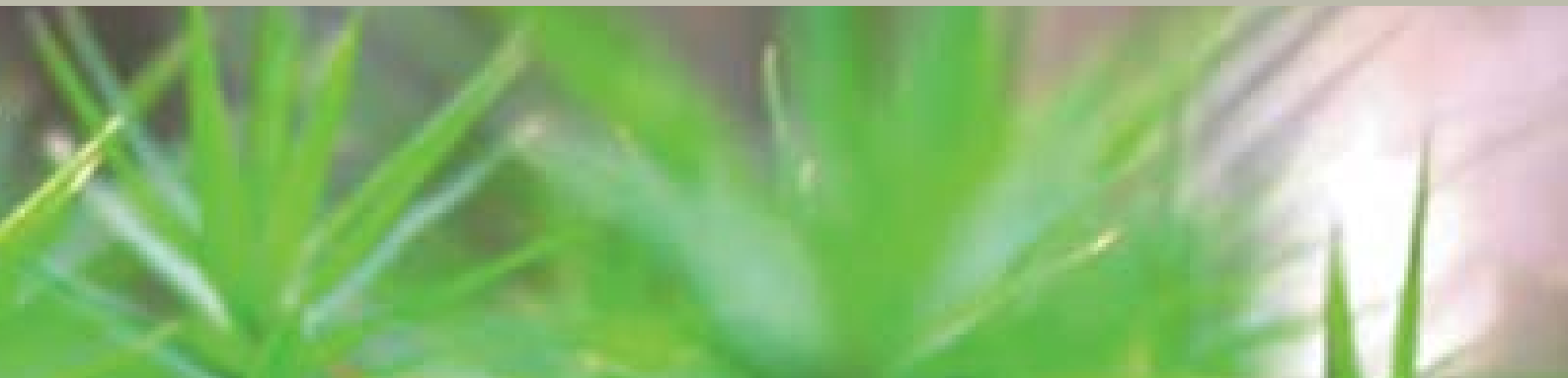
Solid wooden profiles do not need any special maintenance. Dust and dirt can be easily removed from transparent and coloured profiles using mild conventional cleaning agents.

The wax-based varnish creates light and friendly atmospheres. It is perfect for softening rather than covering the natural graining of any wood and perfectly preserves its natural character.

The glossy wood glaze gives wooden profiles a beautiful satin finish that brings all wood to life.



Please note: Wax-based wood varnish is also available in tins. Please refer to the rear of this brochure or visit www.pinucolor.eu for more information.



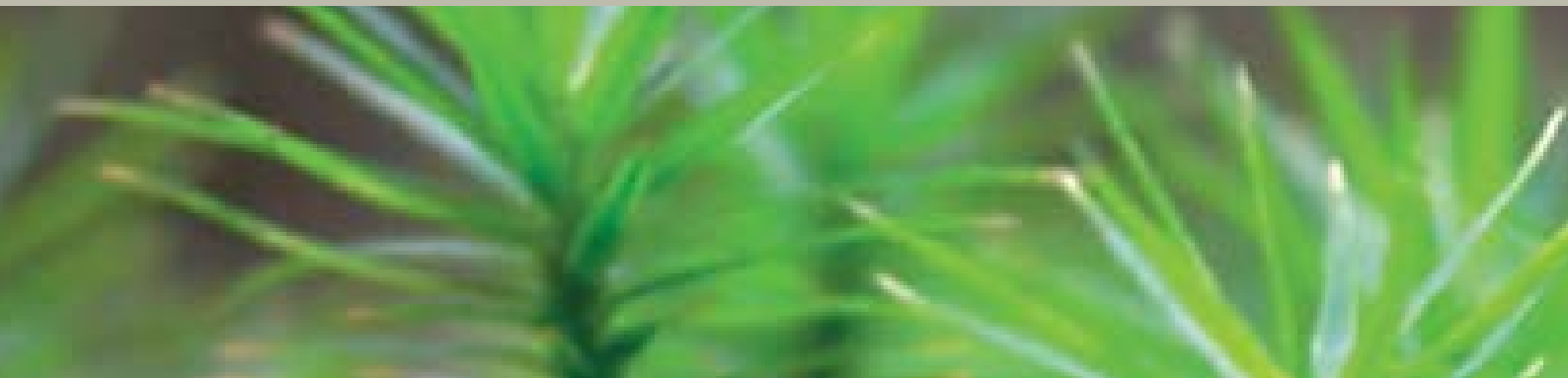
Installing instructions

Wooden profiles are fairly easy to mount and may be installed by anyone with a little aptitude. In contrast to other materials, when cutting, drilling, filing and sanding wood, it will simply reveal its deeper layers.

Solid wooden profiles should be stored inside the room in which it is to be mounted in a stack, without any cover, for several days before installation for acclimation. The room must be dry and free from any residual moisture from recent building work. The profiles should be tied together at the ends and in the centre using masking tape to prevent them from twisting.

You may wish to group profiles by graining and colouration before installation to create a more coherent look.

Untreated wooden profiles should – if required – be treated on all sides before installation since the later shrinkage of the profiles may cause the appearance of untreated strips of woods where they join ceilings and corners. These installation instructions are based on extensive experience in installing profiles. They do not constitute any contractual claims.



Fit a grid on the ceiling by installing battens held down with dowels. Uneven areas should be levelled using wedges. The distance between the individual battens should be no more than 50-60 cm!



In damp rooms, the grid must be constructed in such a way as to allow the two-way movement of air behind the profiles. This can be achieved using counter-battens, which are installed at right angles onto the first set of battens. Please be aware that the counter-battens will determine



the mounting direction of the wood profiles to change. Attach the first wood profile to the grid (the tongue facing the wall) using thin steel pins. Make sure the profile is properly aligned!



Profiles installed at the end of the ceiling, i.e. where the ceiling joins the wall, must be trimmed in such a way as to leave a 10-15 mm gap to the wall. This gap can later be covered with a skirting.











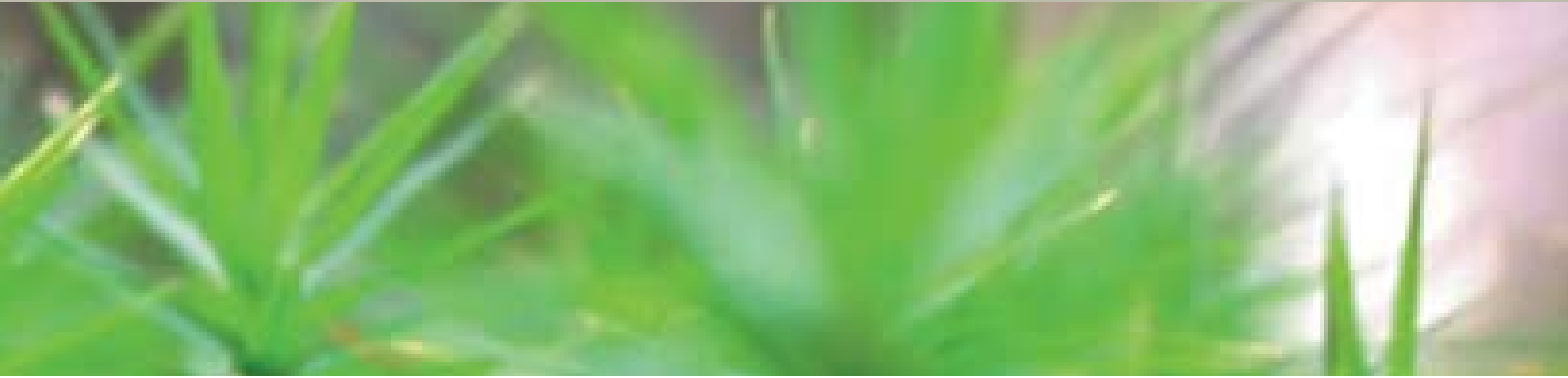
Alternatively, ceiling profiles joining the wall can be finished using a shadow-groove. In this case, shadow groove profiles – which can be painted any colour – are attached all around the ceiling before the wood profiles are installed, after which the ceiling profiles are fitted at a distance of 2-3 cm to the end of the ceiling.

Standard forms of delivery - walls and ceilings










● = in stock
○ = available upon request

	Type of wood	Thickness in mm	Width in mm	Coverage in mm	planed	fine sawn	structured	hacked	stained look	wax-based wood varnish	glossy wood glaze	endmatched	Length in m
 Oceanic	Nordic spruce	14	146	132	●					●		●	2,65
	Nordic spruce	14	146	132	●					●		●	2,65
 Oceanic XL	Nordic spruce	21	146	132	●							●	2,70 / 4,80
		21	146	132	●					●		●	2,70 / 4,80
		21	196	182	●							●	2,70 / 4,80
		21	196	182	●					●		●	2,70 / 4,80
 Antarctic	Nordic spruce	14	146	132			●		●			●	2,50
 Norcapp	Nordic spruce	21	196	182			●		●			●	2,70
 Thermo	Nordic spruce thermo-treated	21	146	136			●					●	4,20 - 5,40
		21	171	161			●					●	4,20 - 5,40
		21	171	161				●				●	4,50
		21	196	186			●					●	4,20 - 5,40
		21	196	186				●				●	4,50
		21	246	236			●					●	4,20 - 5,40
		21	246	236				●				●	4,20 - 4,80
 Coffee & Cream	Nordic spruce	14	96	82	●					●		●	2,35
		14	121	107	●					●		●	2,35
		14	146	132	●					●		●	2,35
 Softline	Nordic spruce	14	121	111	●								3,00 - 5,40
		14	121	111	●					●			3,00 - 5,40
		14	121	111	●						○		3,00 - 5,40
		14	121	111	●					●		●	2,35
		19	146	136	●								3,00 - 5,40
		19	146	136	●					●			3,00 - 5,40
		19	146	136	●						○		3,00 - 5,40
	Nordic pine	14	121	111	●					●			3,30 / 4,50 / 5,10
	Red Cedar	19	144	134	●								1,83 - 5,49
		19	144	134	○					○			1,83 - 5,49
 Chamfer	Nordic spruce	12,5	96	88	●							●	2,65
		12,5	96	88	●					●		●	2,65
		14	121	111	●								3,00 - 5,40
		14	121	111	●					●			3,00 - 5,40
		14	121	111	●							●	2,35
		14	121	111	●					●		●	2,35
		19	146	136	●								3,00 - 5,40
		19	146	136	●					●			3,00 - 5,40
		19	146	136	●						○		3,00 - 5,40
		28	146	136	●								3,00 - 5,40
		28	146	136	●					○			3,00 - 5,40



● = in stock
○ = available upon request

	Type of wood	Thickness in mm	Width in mm	Coverage in mm	planed	fine sawn	structured	hacked	stained look	wax-based wood varnish	glossy wood glaze	endmatched	Length in m
 Faseline	Nordic spruce	14	146	136	●					●			3,00 - 5,40
 Standard	Nordic spruce	12,5	96	88	●								3,00 - 5,40
		12,5	96	88	●					●			3,00 - 5,40
		12,5	146	136	●								3,00 - 5,40
		19	96	88	●								3,00 - 5,40
 Log Cabin	Nordic spruce	14	146	136	●								3,30 / 4,50 / 5,10
		14	146	136	●					●			3,30 / 4,50 / 5,10
	Nordic pine	14	146	136	○								3,30 / 4,50 / 5,10
		14	146	136	○					○			3,30 / 4,50 / 5,10
 Tongue and groove	Nordic spruce	19	96	88	●								3,00 / 3,60 / 4,20 / 4,80 / 5,40
		21	146	136	●								3,90 / 4,50 / 5,10
		25	111	111	●								3,00 - 5,40
 Centre panel profile	Nordic spruce	21	146	136	●								3,30 / 4,50 / 5,10
 Tongue and groove	Nordic spruce	21	96	88	●								3,00 - 5,40
chamfered on all sides (planed on two sides)													
 Double Bouvet	Nordic spruce	27	96	87	●								3,00 - 5,40
(planed on two sides)													

Universal boards – Structural timber



● = in stock
○ = available upon request

Construction wood



Double panel profile
(planed on two sides)



Planed edges
x 4, slightly rounded edges

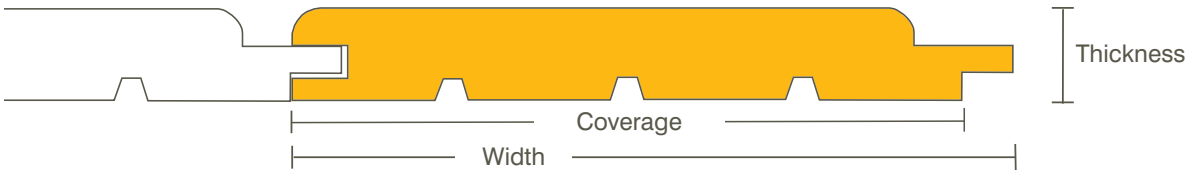


Planed edges
- chamfered



Frame

Type of wood	Thickness in mm	Width in mm	Coverage in mm								Length in m
				planed	fine sawn	structured	hacked	stained look	wax-based wood varnish	glossy wood glaze	
Nordic spruce	21	96	88	●							3,00 - 5,40
	27	96	88	●						3,30 / 3,90 / 4,50 / 5,10	
Nordic spruce	19		94/117/142/ 167/190	●							3,00 - 5,40
	21		94/117/142/ 167/190/215 /240	●							3,00 - 5,40
Nordic spruce	21		94	●							4,20 / 4,80
	27		94	●							4,20 / 4,80
Nordic spruce	27		27/45/58	●							2,40 / 2,70 / 4,80 / 5,40*
	36		36/58	●							2,40 / 2,70 / 4,80 / 5,40*
	40		90/140	●							2,40 / 2,70 / 4,80 / 5,40*
	45		45/70	●							2,40 / 2,70 / 4,80 / 5,40*
	57		57	●							2,40 / 2,70 / 4,80 / 5,40*
	58		80/90	●							2,40 / 2,70 / 4,80 / 5,40*
	70		70/90	●							2,40 / 2,70 / 4,80 / 5,40*
	94		94	●							2,40 / 2,70 / 4,80 / 5,40*



Nordic spruce
Light wood, with a clear structure. Fine-grained; generally featuring a range of small knots.



Nordic pine
Golden-yellow to red-brown wood. Suitable for a large range of uses in interior construction. Produces beautifully coloured and textured walls and ceilings.



Red Cedar
Beige to dark brown wood, largely free from knots. Highly weather resistant, low shrinkage. Pleasant smell, no resin formations.

pinucolor® Wax-based wood varnish
for interior use, available in transparent or various colour stains

pinucolor® wax-based wood varnish is a water-based wood finish that gives wood a natural and fresh look. Available in transparent or various colour stains. This varnish has been approved by the Federal Environmental Agency and has been awarded the environmental Blue Angel label (Blauer Engel) by the RAL (German Institute for Quality Assurance and Certification).



Colours: Transparent, 4 colours
Tin sizes: 0.75 l, 2.5 l, 25 kg

Your **PINUS** Distributor